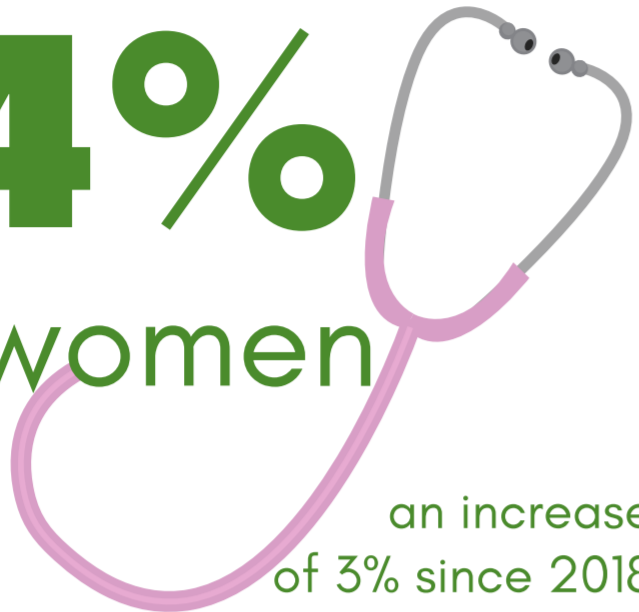


# THE LOWDOWN ON RURAL HOSPITAL DOCTORS

## THESE ARE OUR PEOPLE

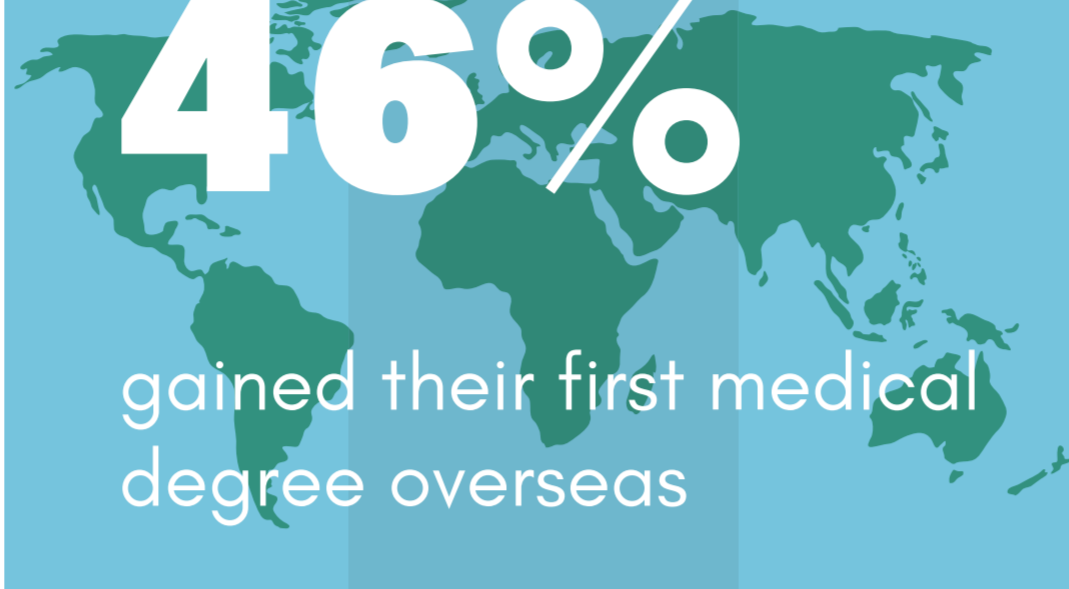
**44%**  
are women



an increase  
of 3% since 2018

**46%**

gained their first medical  
degree overseas

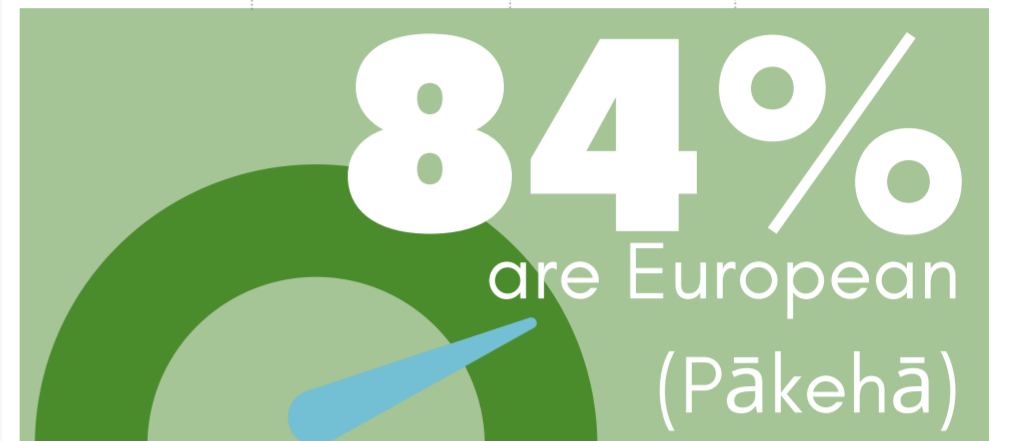


**1/4**

are older than 60

**84%**

are European  
(Pākehā)



**49**

is the median age of a rural hospital doctor in New Zealand

## THIS IS HOW AND WHERE THEY WORK



**28.4**

is the average number  
of hours a rural hospital  
doctor works a week

“I have after-hours  
work activities every  
week”

**28%**

**21%**

report they feel  
burnt out

Rural hospital doctors earn 1.5% more than their urban GP colleagues

## WHEN DO THEY INTEND TO RETIRE?

**15%**

intend to retire 1-2 years from now

**14%**

intend to retire 3-5 years from now

**18%**

intend to retire in 6-10 years from now

**9%**

intend to retire in 11-15 years from now

**45%**

intend to retire in 16 years or more

